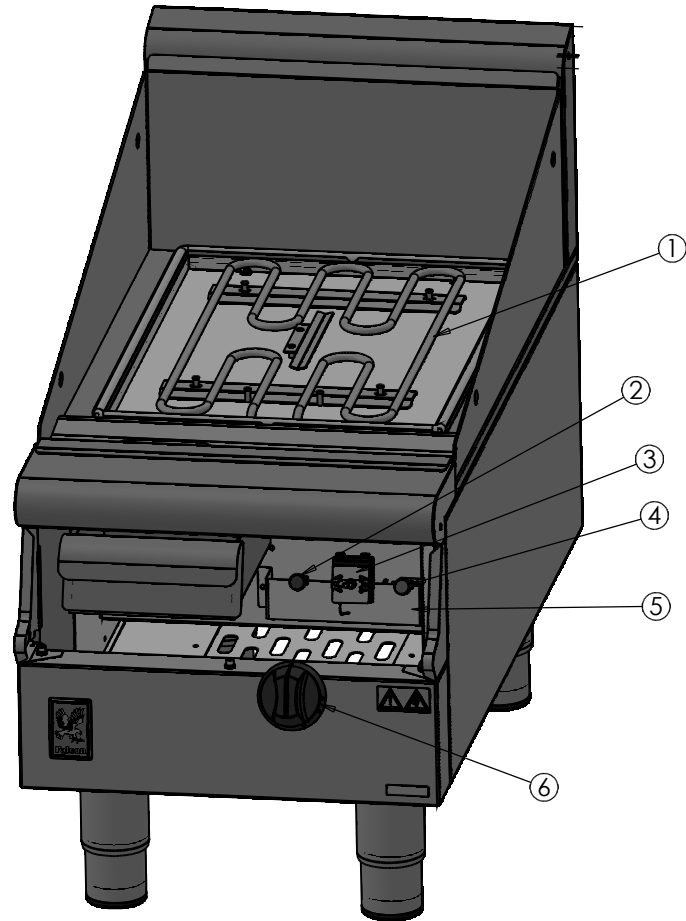


ITEM	DESCRIPTION	SPARES No
1	ELEMENT	539113100
2	RED NEON	730962010
3	OPERATING STAT	537800028
4	AMBER NEON	731740440
5	TERMINAL CONNECTOR	732910270
6	CONTROL KNOB	735850003

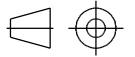


HOT PLATE AND CONTROL PANEL HIDDEN TO SHOW ELECTRICAL COMPONENTS

PRODUCTION ISSUE

ISSUE	MOD No	ALTERATION	DRAWN BY	DATE
A	1383-1	PRODUCTION ISSUE	S.McGUINNESS	24/06/13
B	7024	ITEM 3 WAS 539110371, NOW 539113110	S.McGUINNESS	12/12/13
C	7585	THERMOSTAT WAS 539113110	F.GARVOCK	25/04/16

IF IN DOUBT ASK
DO NOT SCALE
FIRST ANGLE PROJECTION



UNLESS OTHERWISE SPECIFIED:
DIMENSIONS ARE IN MILLIMETERS
TOLERANCES:
LINEAR: ±0.5mm
ANGULAR: ±0.5 DEG

DEBUR AND
BREAK SHARP EDGES

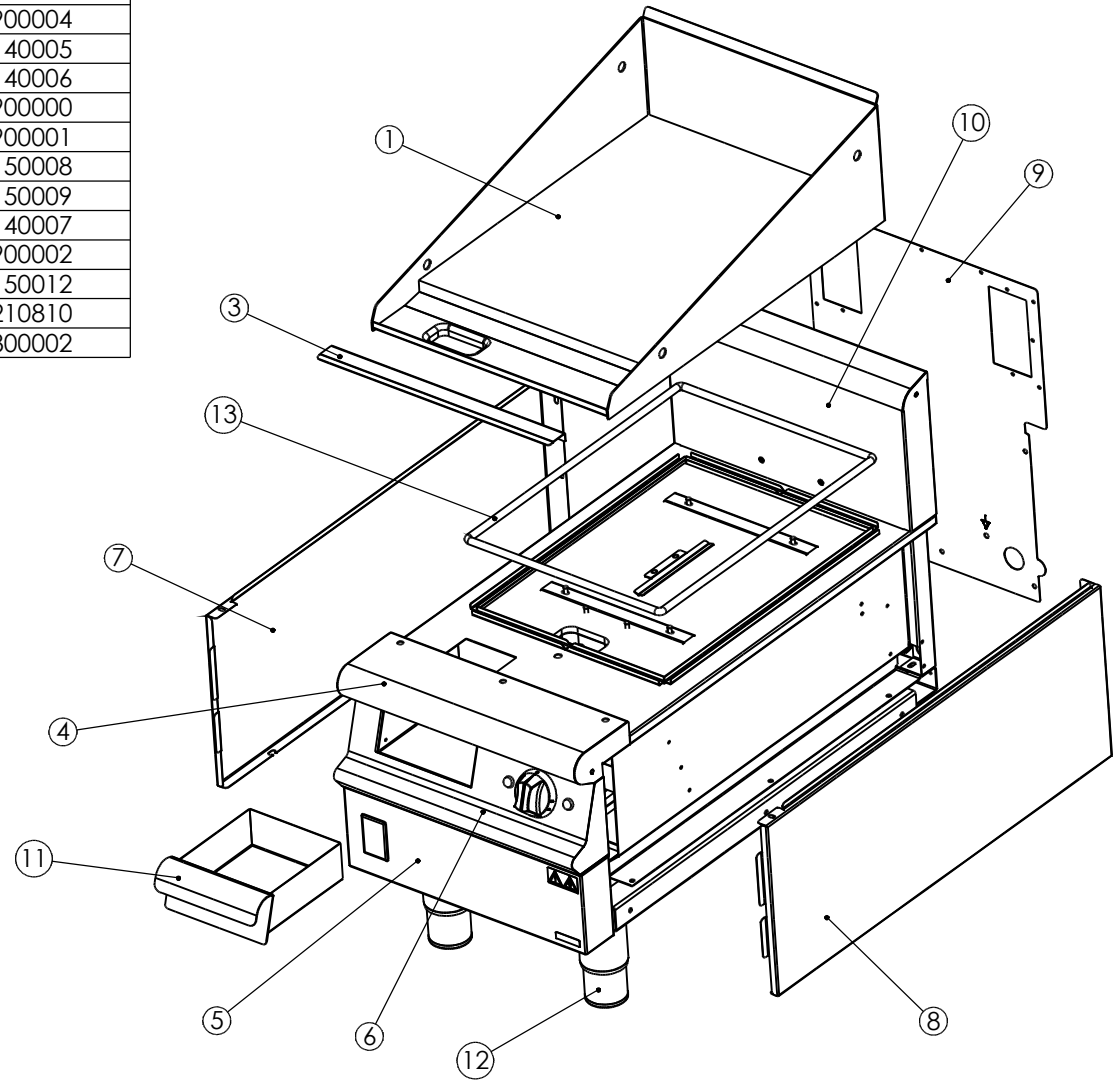
WEIGHT: 70117.47g



DRAWN: S.McGUINNESS	PRODUCT		E3441 GRIDDLE	
DATE: 07/01/13	TITLE			
SCALE: 1:5	SPARES CONTROLS			
MATL:	DRAWING NUMBER		ISSUE	
THICKNESS:	FINISH:		BD50162	
BIN No:	PART No:		C	

© NO REPRODUCTION OR PUBLICATION OF THIS DRAWING MAY BE MADE AND NO ARTICLE MAY BE MANUFACTURED OR ASSEMBLED IN ACCORDANCE WITH THIS DRAWING WITHOUT PRIOR WRITTEN CONSENT. THIS PROHIBITION IS A TERM OF ANY CONTRACT RELATING TO THIS DRAWING. RIGHTS RESERVED UNDER THE COPYRIGHT ACT 1956 AS AMENDED BY THE DESIGN COPYRIGHT ACT 1968

ITEM	DESCRIPTION	SPARES No
1-1	PLATE/ SPASHGUARD ASSY	735900003
1-2	RIBBED PLATE/ SPLASHGUARD ASSY(NOT SHOWN)	735900004
3	CAPPING CHANNEL	535140005
4	HOB ASSEMBLY	535140006
5	CONTROL PANEL	735900000
6	FRONT FACIA ASSEMBLY	735900001
7	OUTER SIDE LH	535150008
8	OUTER SIDE RH	535150009
9	OUTER BACK	535140007
10	OUTER FLUE	735900002
11	FAT JUG ASSEMBLY	535150012
12	ST/ ST ADJUSTABLE LEG	539210810
13	ROPE SEAL	535800002



PRODUCTION ISSUE

ISSUE	MOD No	ALTERATION	DRAWN BY	DATE
A	1383-1	PRODUCTION ISSUE	S.McGUINNESS	24/06/13

IF IN DOUBT ASK
DO NOT SCALE
FIRST ANGLE PROJECTION

UNLESS OTHERWISE SPECIFIED:
DIMENSIONS ARE IN MILLIMETERS
TOLERANCES:
LINEAR: ±0.5mm
ANGULAR: ±0.5 DEG

DEBUR AND
BREAK SHARP EDGES

WEIGHT: 57710.20g



DRAWN: S.McGUINNESS	PRODUCT		E3441 GRIDDLE	
DATE: 07/01/13	TITLE			
SCALE: 1:7	SPARES FITMENTS			
MATL:	DRAWING NUMBER		ISSUE	
THICKNESS:	FINISH:		BD50161	
BIN No:	PART No:		A	