



DOMINATOR*PLUS*

E3741 Flexi Pan

Key features

- Stainless steel pan with duplex steel base
 - Delivers even heating across the base of the pan
- Versatile cooking performance
 - Able to carry out six different cooking methods
- Retains heat so food can be kept warm without overcooking
 - Can be used as a bain marie
- Control panel icons indicate optimum setting for each cooking process
 - Easy to use
- Supplied with 1/1 GN 200mm deep tray below pan
 - Makes it simple to decant soups and stews
- Temperature range of 60
 - Easy install
- Internal cabinet features rounded corners
 - Prevent dirt traps and is easy to clean
- Manual fill so no water supply required
 - Easy install
- Laser-etched control icons
 - Permanent, indelible markings

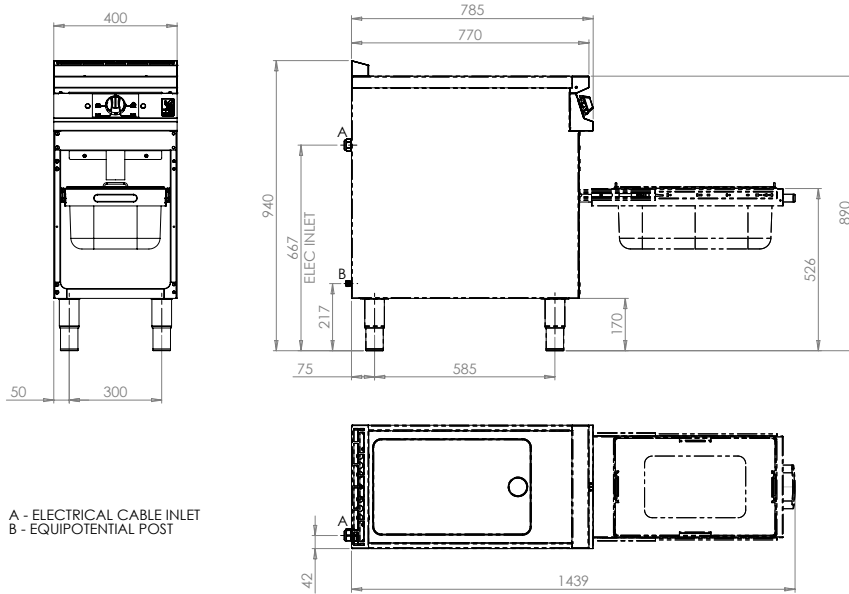
Accessories

- Steaming tray
- Lid
- Factory fitted, adjustable castors
- Fixed installation kit



Similar Models

- E9741 Flexi pan



Unit is the same hob height on castors

Measurements *in mm*

Specification *details*

Electrical rating (kW)	7	
Electrical supply voltage	400V 3N~	
Required electrical supply (A)	32	
Electrical current split (A)	L1: 11.2 L2: 11.2 L3: 11.2	
Element rating (kW)	2.33	
Capacity (litres)	12	
Weight (kg)	62	
Packed weight (kg)	72	
Packed dimensions (w x d x h - mm)	450 x 1000 x 1100	
GTIN numbers	On feet	On castors
	5056466900694	5056466900687

Installation notes

Adequate ventilation must be provided to supply sufficient fresh air and to allow easy removal of any such products that may present a risk to health. Please consult current legislation for details that relate to specific locations.

Install unit on a level, fireproof surface in a well-lit position. A clearance of 150mm should be observed between appliance and any combustible wall. Please consult the appliance installation manual for further details.

