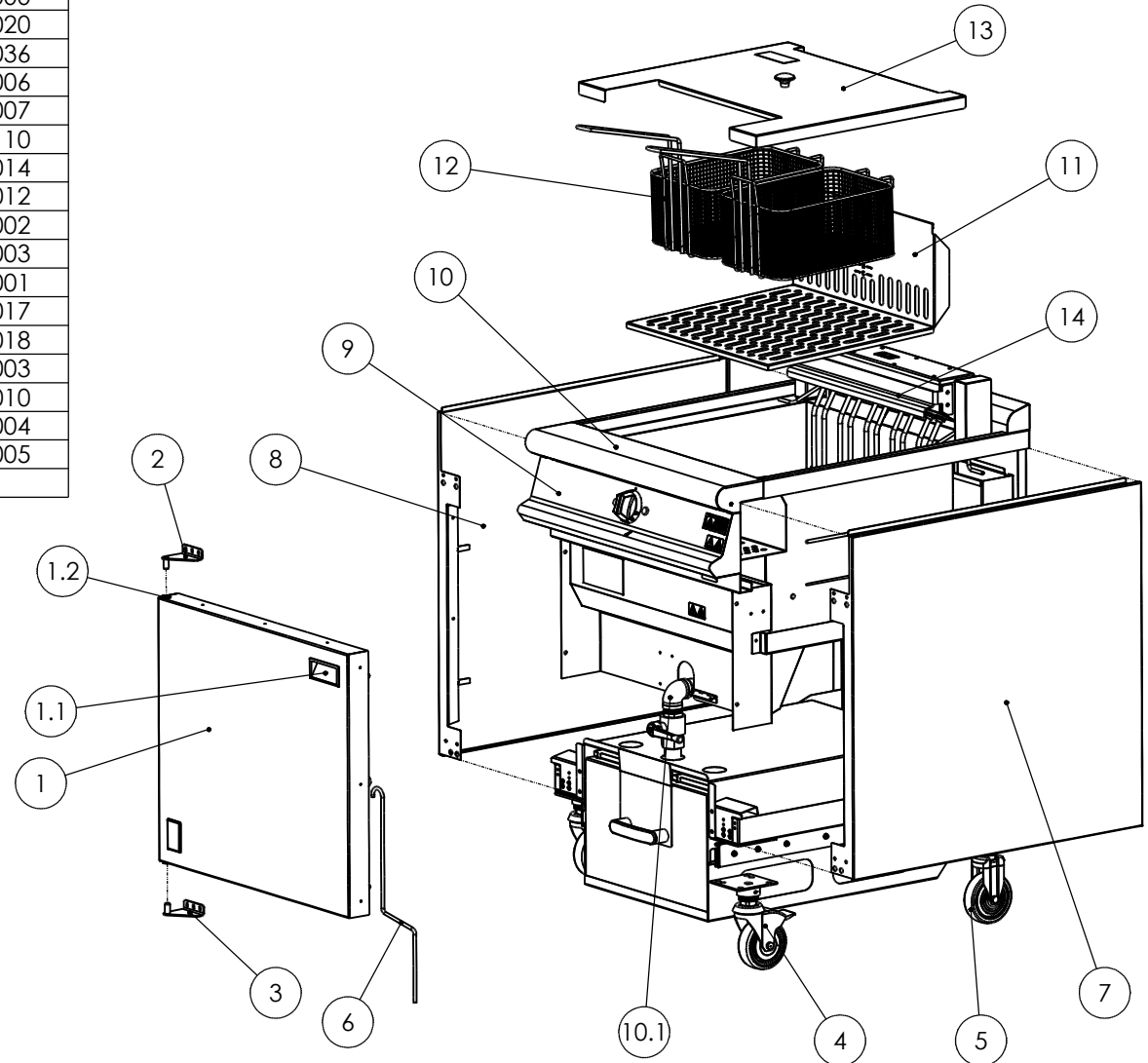


ITEM	DESCRIPTION	SPARES No
1	DOOR ASSEMBLY	731330000
1.1	DOOR HANDLE	736010020
1.2	DOOR HINGE BUSH (x2)	536060036
2	DOOR HINGE - TOP	535200006
3	DOOR HINGE - BOTTOM	535200007
4	CASTOR - BRAKED (x2)	536430110
5	CASTOR - FIXED (x2)	731350014
6	DRAIN PROD / LIFTING TOOL	731350012
7	OUTER SIDE PANEL - RH	535580002
8	OUTER SIDE PANEL - LH	535580003
9	CONTROL PANEL	731330001
10	HOB/PAN ASSEMBLY C/W DRAIN VALVE	731330017
10.1	DRAIN VALVE ASSEMBLY	731330018
11	ELEMENT GUARD	731330003
12	BASKET (x1)	531312010
13	DUST COVER	731330004
14	BASKET HANGER	731330005



PRODUCTION ISSUE

ISSUE	MOD No	ALTERATION	DRAWN BY	DATE
A	1678	PRODUCTION ISSUE	I.JAMES	27/03/17

IF IN DOUBT ASK
DO NOT SCALE
FIRST ANGLE PROJECTION



UNLESS OTHERWISE SPECIFIED:
DIMENSIONS ARE IN MILLIMETERS
TOLERANCES:
LINEAR: ±0.5mm
ANGULAR: ±0.5 DEG

DEBUR AND
BREAK SHARP EDGES

WEIGHT: 111553.86g



DRAWN: T.ITOH

DATE: 23/02/17

SCALE: 1:10

MATL:

THICKNESS:

BIN No:

PRODUCT

E3860B FRYER

TITLE

SPARES - MAIN BODY

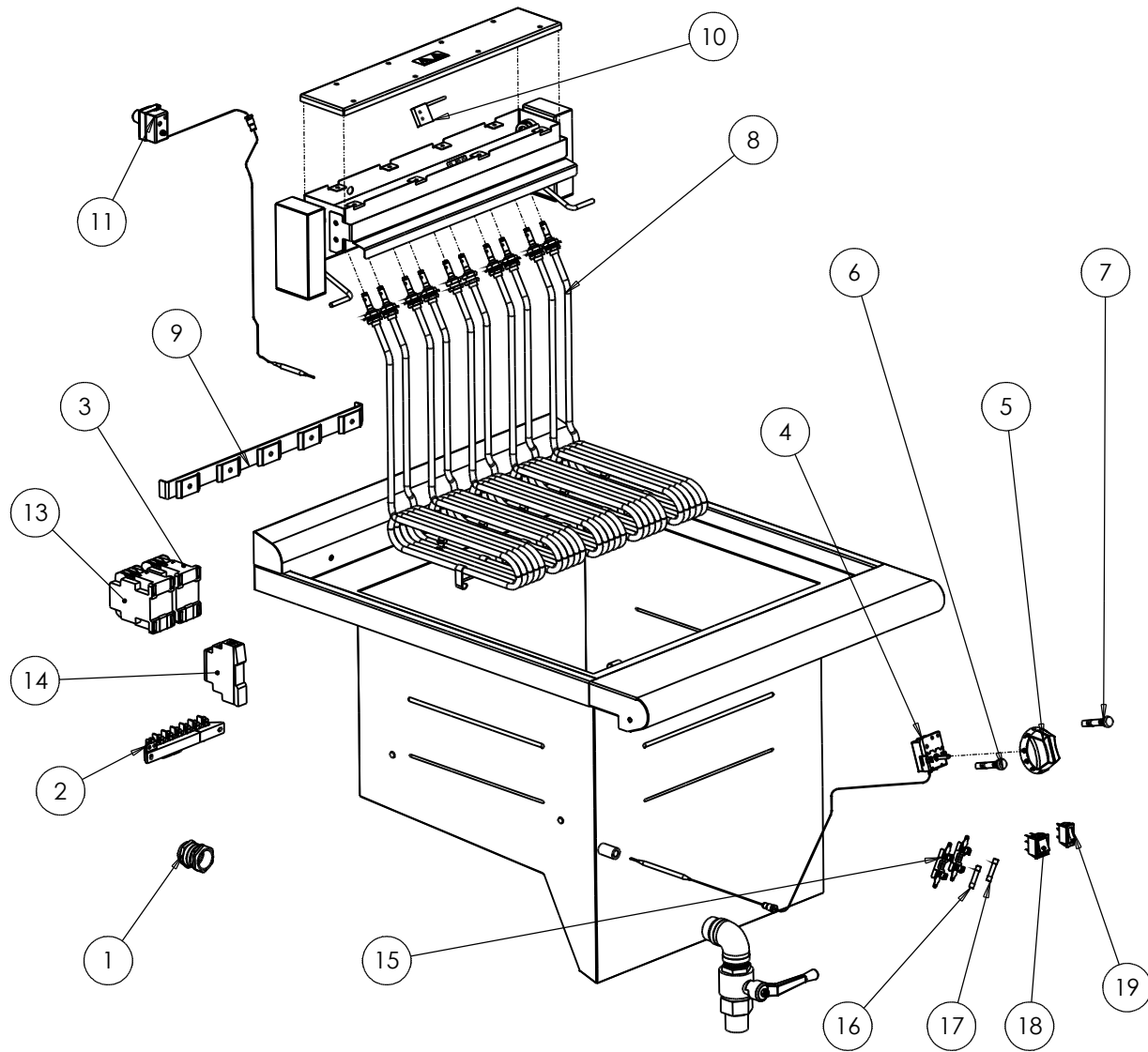
DRAWING NUMBER

AD54313

ISSUE

A

ITEM	DESCRIPTION	SPARES No
1	MAINS CABLE GLAND C/W NUT	731350026
2	TERMINAL BLOCK 7 WAY	734000075
3	SAFETY CONTACTOR	734510010
4	OPERATING THERMOSTAT	731320106
5	CONTROL KNOB	731320107
6	RED NEON	730962010
7	AMBER NEON	730962040
8	ELEMENT C/W GASKETS	731330009 (3.65kW)
8.1	ELEMENT SET C/W GASKETS	731330010 (5 OFF)
9	ELEMENT CLAMP ASSEMBLY	731330011
10	TILT SWITCH	735750014
11	SAFETY STAT C/W FITTINGS	731320111
12	WIRING LOOM (NOT SHOWN)	731330021
13	OPERATING CONTACTOR	734510010
14	PUMP TIMER	536470007
15	FUSE HOLDER	734310510
16	2A FUSE	734243006
17	5A FUSE	536430009
18	PUMP SWITCH	536380008
19	ON/OFF SWITCH	731430011



PRODUCTION ISSUE

ISSUE	MOD No	ALTERATION	DRAWN BY	DATE
A	1717	PRODUCTION RELEASE.	T.ITOH	19/10/17

IF IN DOUBT ASK
DO NOT SCALE
FIRST ANGLE PROJECTION

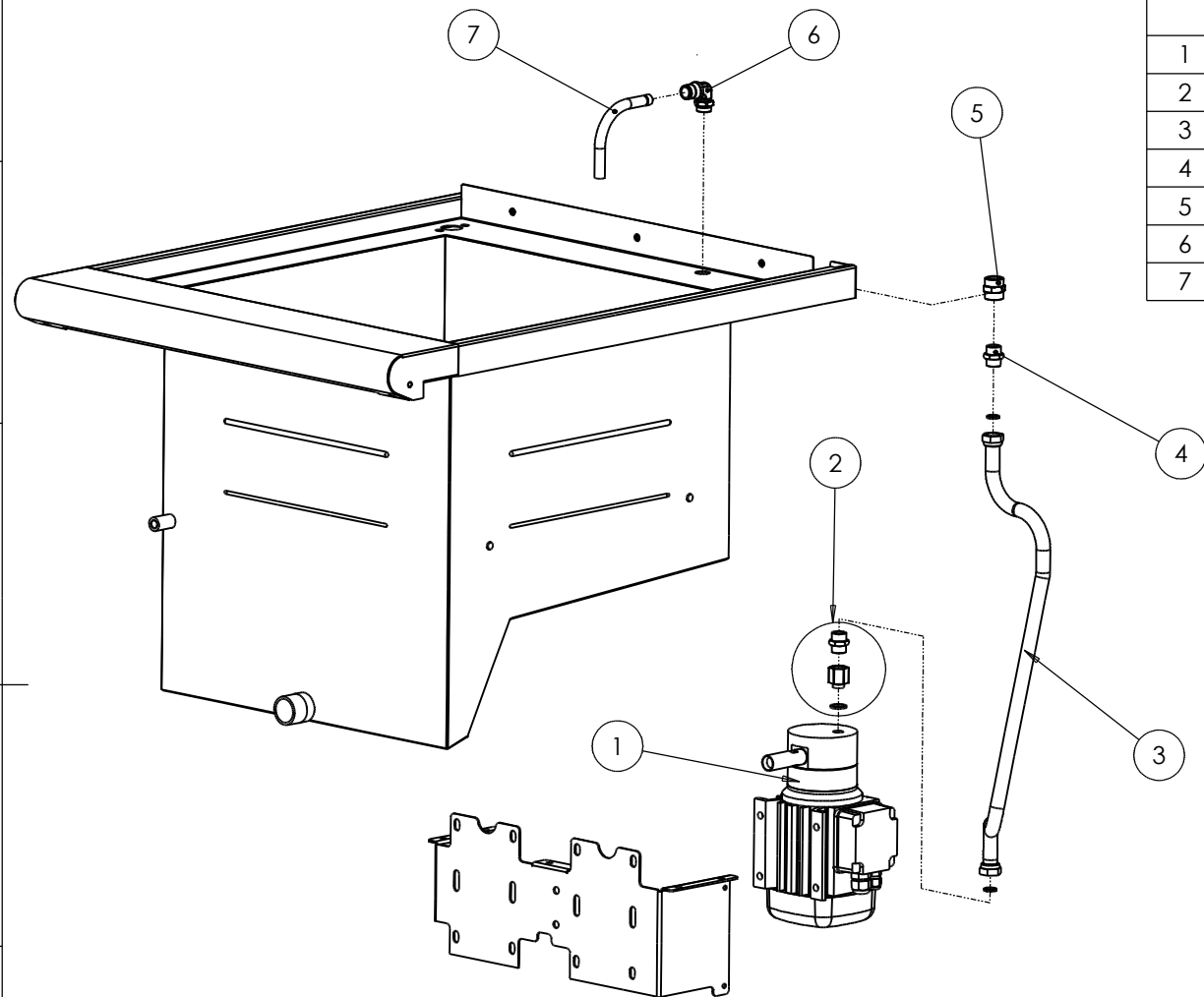
UNLESS OTHERWISE SPECIFIED:
DIMENSIONS ARE IN MILLIMETERS
TOLERANCES:
LINEAR: ±0.5mm
ANGULAR: ±0.5 DEG

DEBUR AND
BREAK SHARP EDGES

WEIGHT: 24097.09g



DRAWN: T.ITOH	PRODUCT E3860F FRYER	
DATE: 30/08/17	TITLE SPARES - CONTROLS	
SCALE: 1:7	DRAWING NUMBER	ISSUE
MATL:	AD54777	A
THICKNESS:	FINISH:	PART No:
BIN No:		



ITEM	DESCRIPTION	SPARES No
1	OIL PUMP C/W SCREWS	535770077
2	PUMP TO PIPE FIXINGS	535770210
3	FLEXI HOSE C/W SEALS	535770111
4	ADAPTOR 3/8" EQUAL MALE	535770113
5	ADAPTOR 3/8" EQUAL FEMALE	535580048
6	PUSH IN ELBOW 3/8" MALE	533500013
7	OIL RETURN PIPE	535580047

PRODUCTION ISSUE

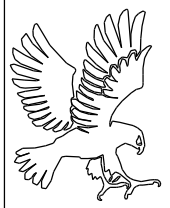
ISSUE	MOD No	ALTERATION	DRAWN BY	DATE
A	1717	PRODUCTION RELEASE.	T.ITOH	19/10/17

IF IN DOUBT ASK
DO NOT SCALE
FIRST ANGLE PROJECTION

UNLESS OTHERWISE SPECIFIED:
DIMENSIONS ARE IN MILLIMETERS
TOLERANCES:
LINEAR: ±0.5mm
ANGULAR: ±0.5 DEG

DEBUR AND
BREAK SHARP EDGES

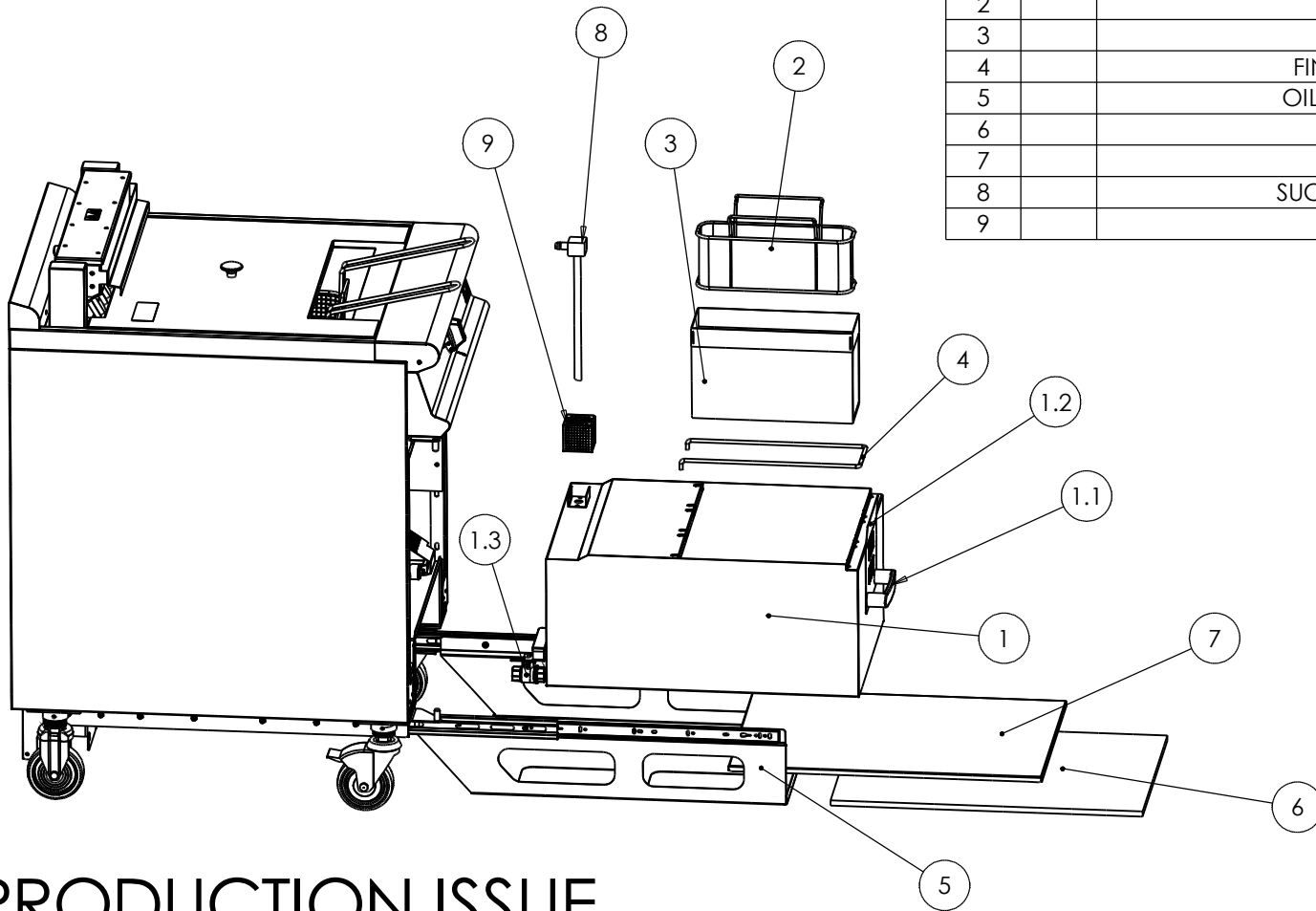
WEIGHT: 30148.15g



DRAWN: T.ITOH	PRODUCT	
DATE: 31/08/17	E3860F FRYER	
SCALE: 1:6	TITLE	
	SPARES - PUMP & FITTINGS	
MATL:	DRAWING NUMBER	ISSUE
THICKNESS:	FINISH:	AD54779
BIN No:	PART No:	
		A

© NO REPRODUCTION OR PUBLICATION OF THIS DRAWING MAY BE MADE AND NO ARTICLE MAY BE MANUFACTURED OR ASSEMBLED IN ACCORDANCE WITH THIS DRAWING WITHOUT PRIOR WRITTEN CONSENT. THIS PROHIBITION IS A TERM OF ANY CONTRACT RELATING TO THIS DRAWING. RIGHTS RESERVED UNDER THE COPYRIGHT ACT 1956 AS AMENDED BY THE DESIGN COPYRIGHT ACT 1968

ITEM	DESCRIPTION	SPARES No
1	OIL CONTAINER ASSY	731330022
1.1	OIL CONTAINER HANDLE	731350030
1.2	OIL CONTAINER FRONT GUARD	731330020
1.3	OIL CONTAINER VALVE ASSY	535580050
2	BASKET FILTER	535580037
3	FINE MESH FILTER	535580038
4	FINE MESH WIRE SUPPORT	535580039
5	OIL CONTAINER CARRIAGE	535580040
6	INSULATED HEAT PAD	535580041
7	HEAT PAD COVER	535580042
8	SUCTION PIPE C/W "O" RING	731330023
9	SUCTION PIPE FILTER	535580052



PRODUCTION ISSUE

ISSUE	MOD No	ALTERATION	DRAWN BY	DATE
A	1717	PRODUCTION RELEASE.	T.ITOH	19/10/17

IF IN DOUBT ASK
DO NOT SCALE
FIRST ANGLE PROJECTION

UNLESS OTHERWISE SPECIFIED:
DIMENSIONS ARE IN MILLIMETERS
TOLERANCES:
LINEAR: ±0.5mm
ANGULAR: ±0.5 DEG

DEBUR AND
BREAK SHARP EDGES

WEIGHT: 95472.04g



DRAWN: T.ITOH	PRODUCT		E3860F FRYER	
DATE: 30/08/17	TITLE		SPARES - OIL CONTAINER	
SCALE: 1:9	DRAWING NUMBER		ISSUE	
MATL:	THICKNESS:		FINISH:	
BIN No:	PART No:		AD54778	
				A

© NO REPRODUCTION OR PUBLICATION OF THIS DRAWING MAY BE MADE AND NO ARTICLE MAY BE MANUFACTURED OR ASSEMBLED IN ACCORDANCE WITH THIS DRAWING WITHOUT PRIOR WRITTEN CONSENT. THIS PROHIBITION IS A TERM OF ANY CONTRACT RELATING TO THIS DRAWING. RIGHTS RESERVED UNDER THE COPYRIGHT ACT 1956 AS AMENDED BY THE DESIGN COPYRIGHT ACT 1968