

ITEM	DESCRIPTION	SPARES No.
1	HOB SURROUND ASSY INCL RAIL	731881120
2	FRONT HOB RAIL ASSEMBLY	731881111
3	OUTER SIDE PANEL RH	531880020
4	OVEN SHELF HANGER	531880450
5	OVEN SHELF	531880150
6	ADJUSTABLE LEG S/S	535480067
7	DOOR SPRING ADJUSTER PLATE	531880270
8	CORNER POST	731880500
9	OVEN DOOR SPRING	531880210
10	BOTTOM DOOR PANEL	531880240
11	DOOR ASSEMBLY COMPLETE	531880160
11a	OUTER DOOR PANEL	531880200
12	BOTTOM PANEL HINGE PIN	531880130
13	DOOR FRAME	531880205
14	CONTROL PANEL ASSEMBLY	731880080
15	DOOR HINGE PIN	531880230
16	DOOR HANDLE ASSEMBLY	531880170
17	OVEN SHELF HANGER BRACKET	535480066
18	OUTER SIDE PANEL LH	531880010
19	SET OF DOOR SEALS (not shown)	531880161

PRODUCTION ISSUE

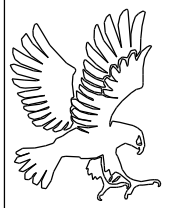
ISSUE	MOD No	ALTERATION	DRAWN BY	DATE
A	8030	PRODUCTION ISSUE	F.GARVOCK	20/12/17

IF IN DOUBT ASK
DO NOT SCALE
FIRST ANGLE PROJECTION

UNLESS OTHERWISE SPECIFIED:
DIMENSIONS ARE IN MILLIMETERS
TOLERANCES:
LINEAR: ±0.5mm
ANGULAR: ±0.5 DEG

DEBUR AND
BREAK SHARP EDGES

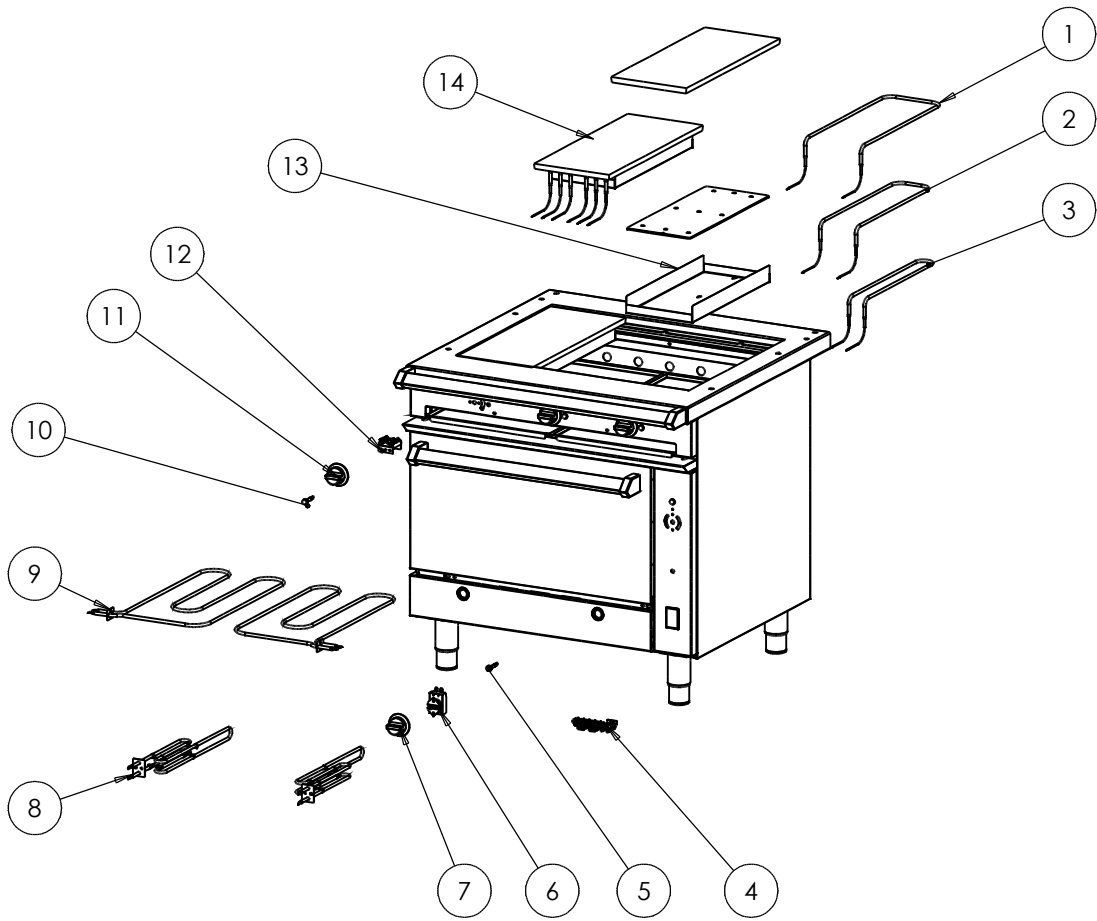
WEIGHT: 136200.64g



DRAWN: F.GARVOCK	PRODUCT
DATE: 19/12/17	TITLE
SCALE: 1:15	SPARES DIAGRAM PANELS & FITMENTS
MATL:	DRAWING NUMBER
FINISH:	AA55014

E1006 CHIEFTAIN RANGE	
SPARES DIAGRAM PANELS & FITMENTS	
DRAWING NUMBER	ISSUE
AA55014	A

© NO REPRODUCTION OR PUBLICATION OF THIS DRAWING MAY BE MADE AND NO ARTICLE MAY BE MANUFACTURED OR ASSEMBLED IN ACCORDANCE WITH THIS DRAWING WITHOUT PRIOR WRITTEN CONSENT. THIS PROHIBITION IS A TERM OF ANY CONTRACT RELATING TO THIS DRAWING. RIGHTS RESERVED UNDER THE COPYRIGHT ACT 1956 AS AMENDED BY THE DESIGN COPYRIGHT ACT 1968



ITEM	DESCRIPTION	SPARES No.
1	OUTER HOTPLATE ELEMENT 340V	730960040
2	INTER HOTPLATE ELEMENT 240V	730960030
3	INNER HOTPLATE ELEMENT 240V	730960020
4	MAINS TERMINAL BLOCK	731000006
5	CHROME BEZEL RED NEON	730962010
6	OVEN THERMOSTAT	731880190
7	THERMOSTAT KNOB	731880180
8	BOTTOM OVEN ELEMENT 240V	731880230
9	TOP OVEN ELEMENT 240V	731880250
10	CHROME BEZEL AMBER NEON	730962040
11	KNOB 6 HEAT SWITCH	731880170
12	CONTROL SWITCH	731880160
13	HOTPLATE INSULATION BOX	730964060
14	REC HOTPLATE ASSY 240V	734000076

PRODUCTION ISSUE

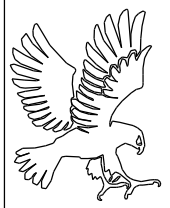
ISSUE	MOD No	ALTERATION	DRAWN BY	DATE
A	8030	PRODUCTION ISSUE	F.GARVOCK	20/12/17

IF IN DOUBT ASK
DO NOT SCALE
FIRST ANGLE PROJECTION

UNLESS OTHERWISE SPECIFIED:
DIMENSIONS ARE IN MILLIMETERS
TOLERANCES:
LINEAR: ±0.5mm
ANGULAR: ±0.5 DEG

DEBUR AND
BREAK SHARP EDGES

WEIGHT: 152366.88g



DRAWN: F.GARVOCK	PRODUCT E1006 CHIEFTAIN RANGE	
DATE: 19/12/17	TITLE SPARES DIAGRAM ELEMENTS & CONTROLS	
SCALE: 1:15	DRAWING NUMBER	ISSUE
MATL:	AA55013	A
FINISH:		

NO REPRODUCTION OR PUBLICATION OF THIS DRAWING MAY BE MADE AND NO ARTICLE MAY BE MANUFACTURED OR ASSEMBLED IN ACCORDANCE WITH THIS DRAWING WITHOUT PRIOR WRITTEN CONSENT. THIS PROHIBITION IS A TERM OF ANY CONTRACT RELATING TO THIS DRAWING. RIGHTS RESERVED UNDER THE COPYRIGHT ACT 1956 AS AMENDED BY THE DESIGN COPYRIGHT ACT 1968