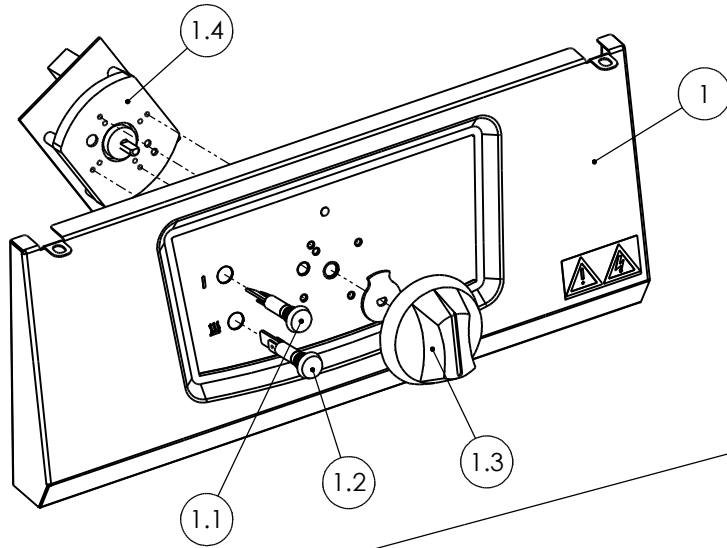
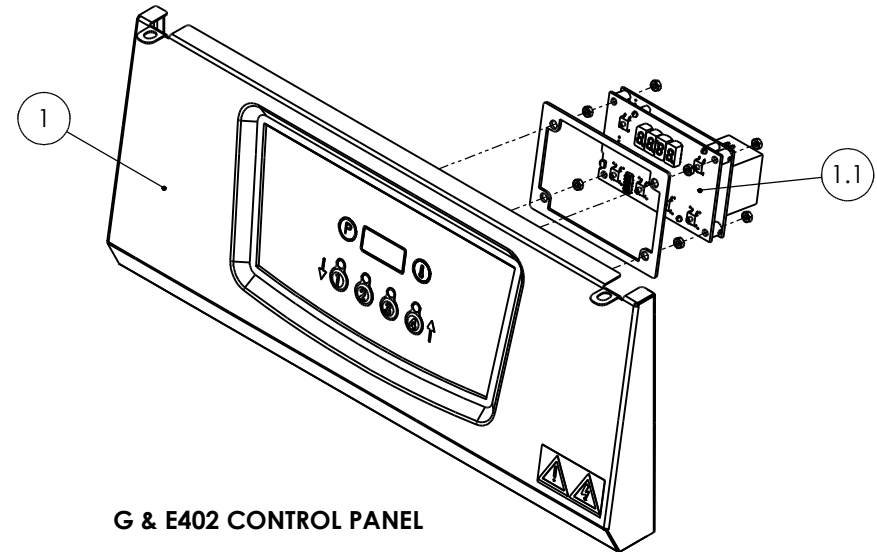


G & E401 CONTROL PANEL



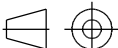

ITEM	DESCRIPTION	SPARES No.
1	CONTROL PANEL ASSEMBLY	731350000
1.1	RED NEON	735010370
1.2	AMBER NEON	735010380
1.3	CONTROL KNOB C/W STOP	731350001
1.4	CONTROLLER	731350002

ITEM	DESCRIPTION	SPARES No.
1	CONTROL PANEL ASSEMBLY	731360000
1.1	CONTROLLER C/W SPACER	731360001

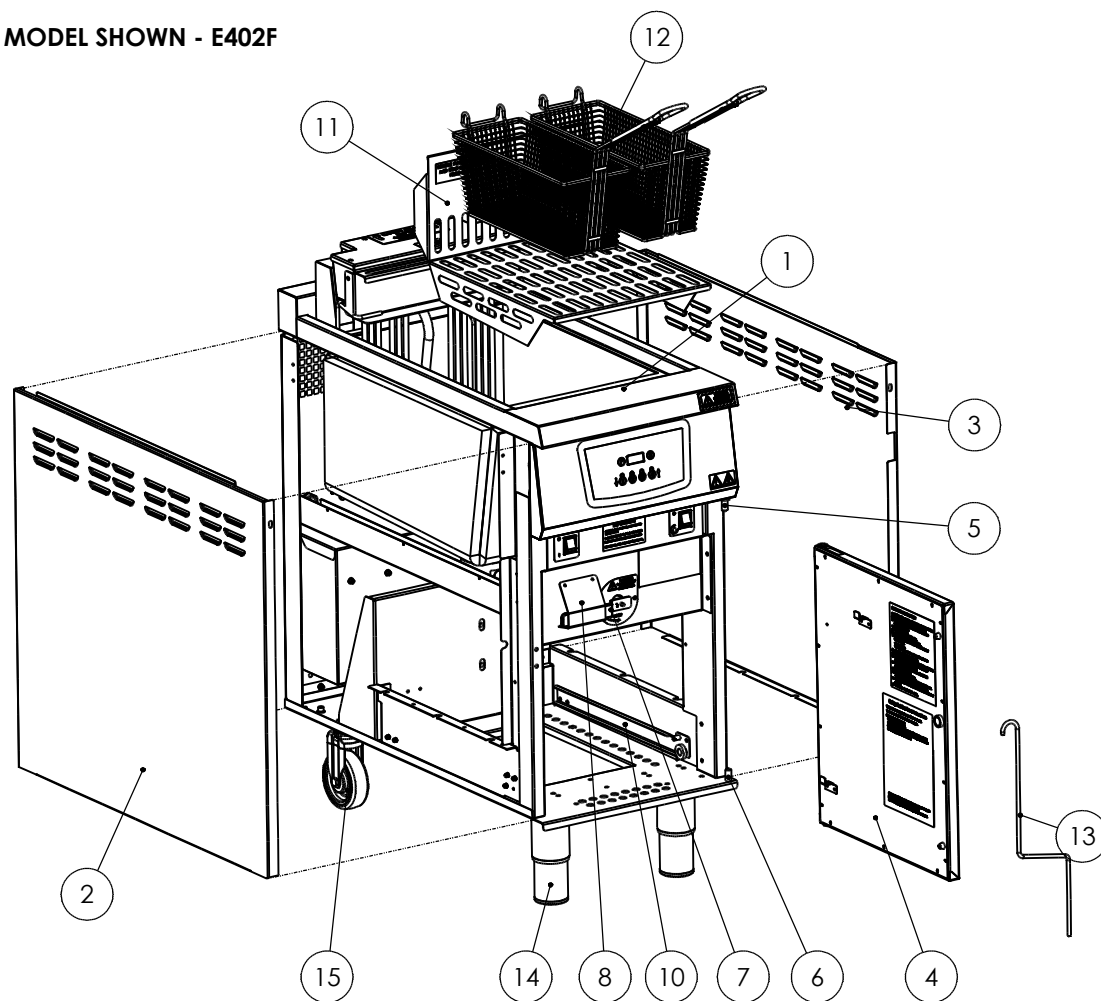


G & E402 CONTROL PANEL

CLEARED FOR PRODUCTION

ISSUE	MOD No	ALTERATION	DRAWN BY	DATE	<div>IF IN DOUBT ASK DO NOT SCALE FIRST ANGLE PROJECTION</div> <div></div> <div>UNLESS OTHERWISE SPECIFIED: DIMENSIONS ARE IN MILLIMETERS TOLERANCES: LINEAR: ±0.5mm ANGULAR: ±0.5 DEG</div> <div>DEBUR AND BREAK SHARP EDGES</div> <div>WEIGHT: 1208412.16g</div>		DRAWN: G.SMITH				PRODUCT		G & E401/402 SINGLE PAN FRYERS		
A	1234/10	PRODUCTION ISSUE	G.SMITH	22/11/10			DATE: 22/11/10				TITLE				
							SCALE:				SPARES - CONTROL PANELS				
							MATL:						DRAWING NUMBER		ISSUE
							THICKNESS:				FINISH:		AD48017		A
							BIN No:				PART No:				
<div>© NO REPRODUCTION OR PUBLICATION OF THIS DRAWING MAY BE MADE AND NO ARTICLE MAY BE MANUFACTURED OR ASSEMBLED IN ACCORDANCE WITH THIS DRAWING WITHOUT PRIOR WRITTEN CONSENT. THIS PROHIBITION IS A TERM OF ANY CONTRACT RELATING TO THIS DRAWING. RIGHTS RESERVED UNDER THE COPYRIGHT ACT 1956 AS AMENDED BY THE DESIGN COPYRIGHT ACT 1968</div>															

MODEL SHOWN - E402F



ITEM	DESCRIPTION	SPARES No
1	HOB / PAN ASSEMBLY C/W DRAIN VALVE	731350003
2	LH OUTER SIDE	731350004
3	RH OUTER SIDE	731350005
4	DOOR ASSEMBLY	731350006
5	TOP DOOR HINGE	536430108
6	BOTTOM DOOR HINGE PIN	536430109
7	DRAIN VALVE & HANDLE ASSY	731350007
8	DRAIN HANDLE FLAP	731350008
9	LH BUCKET RUNNER (NOT SHOWN)	731350009
10	RH BUCKET RUNNER	731350010
11	ELEMENT GUARD	731350011
12	CHIP BASKET	536430126
13	DRAIN PROD / LIFTING TOOL	731350012
14	ADJUSTABLE FEET	731350013
15	CASTORS	731350014

PRODUCTION ISSUE

ISSUE	MOD No	ALTERATION	DRAWN BY	DATE
B	7771	DESCRIPTION OF ITEM 7 WAS HANDLE ONLY	F.GARVOCK	09/01/17

IF IN DOUBT ASK
DO NOT SCALE
FIRST ANGLE PROJECTION



UNLESS OTHERWISE SPECIFIED:
DIMENSIONS ARE IN MILLIMETERS
TOLERANCES:
LINEAR: $\pm 0.5\text{mm}$
ANGULAR: $\pm 0.5\text{ DEG}$

DEBUR AND
BREAK SHARP EDGES

WEIGHT: g



DRAWN: **G.SMITH**

DATE: **23/11/10**

SCALE:

MATL:

THICKNESS:

BIN No:

PRODUCT

E401/402 SINGLE PAN FRYER

TITLE

SPARES - MAIN BODY

DRAWING NUMBER

AD48018

ISSUE

B

A

B

C

D

E

A

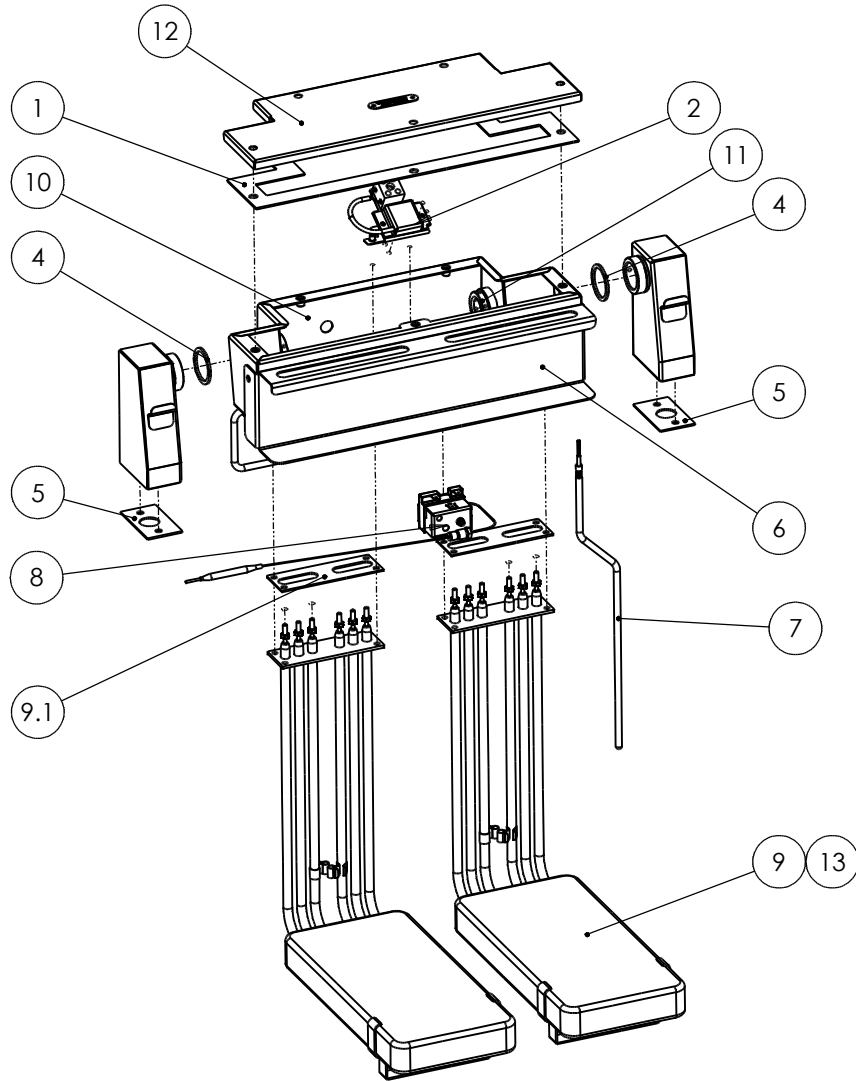
B

C

D

E

F



ITEM	DESCRIPTION	SPARES No
1	ELEMENT BOX LID GASKET	731350015
2	TILT SWITCH ASSEMBLY	731350051
3		
4	ELEMENT BOX CABLE GASKET	731350017
5	ELEMENT BOX SUPPORT GASKET	731350018
6	BASKET HANGING RAIL	731350019
7	THERMISTOR PROBE C/W FITTINGS	731350020
8	SAFETY STAT C/W FITTINGS	731350021
9	ELEMENT 10kW C/W GASKET	731350022
9.1	ELEMENT GASKET	731350023
10	ELEMENT BOX ASSEMBLY (BOX ONLY)	731350120
11	ELEMENT BOX BUSH	731350054
12	ELEMENT BOX LID	731350047
13	ELEMENT 7.5kW C/W GASKET	731350075

PRODUCTION ISSUE

ISSUE	MOD No	ALTERATION	DRAWN BY	DATE
A	1234/1	PRODUCTION ISSUE	F.GARVOCK	26/06/12
B	6658	ITEM 2 WAS 731350016 SWITCH BRACKET. ITEM 3 WAS 73570014 TILT SWITCH	F.GARVOCK	26/06/12
C	7949	ITEM 13 ADDED, 7.5kW ELEMENT	S.MOONEY	13/09/17

IF IN DOUBT ASK
DO NOT SCALE
FIRST ANGLE PROJECTION



UNLESS OTHERWISE SPECIFIED:
DIMENSIONS ARE IN MILLIMETERS
TOLERANCES:
LINEAR: ±0.5mm
ANGULAR: ±0.5 DEG

DEBUR AND
BREAK SHARP EDGES

WEIGHT: 1073699.94g



DRAWN: **G.SMITH**

DATE: **23/11/10**

SCALE:

MATL:

THICKNESS:

BIN No:

PRODUCT

E401/402 SINGLE PAN FRYER

TITLE

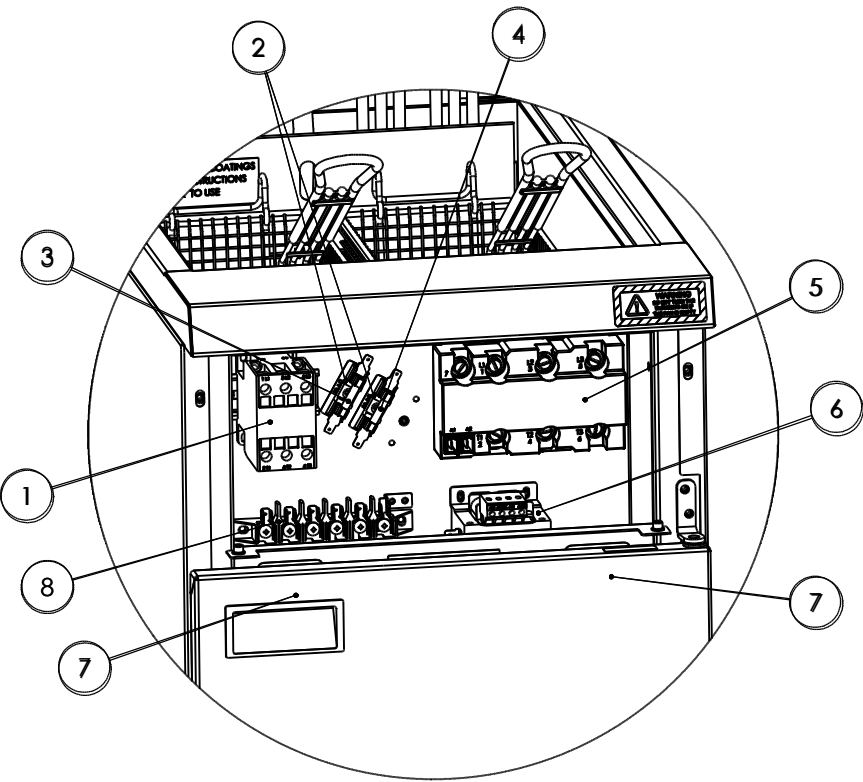
SPARES - ELEMENTS / HOUSING

DRAWING NUMBER

ISSUE

AD48019

C



MODEL SHOWN - E402F

ITEM	DESCRIPTION	UNIT	SPARES No
1	CONTACTOR		734510010
2	FUSE HOLDER		734310510
3	2 AMP ANTI-SURGE FUSE		731050002
4	5 AMP ANTI-SURGE FUSE	FILTER MODELS ONLY	536430009
5	SOLID STATE POWER SWITCH		731350024
6	STEP-DOWN TRANSFORMER	402 ONLY	731360002
7	ROCKER SWITCH		732950006
8	MAINS TERMINAL BLOCK		731000006
9	MAINS INLET CABLE PRE MAY 2011		731350025
9A	MAINS INLET CABLE CABLE POST MAY 2011		731350046
10	MAINS INLET CABLE GLAND C/W NUT (NOT SHOWN)		731350026
11	MAIN WIRING LOOM (NOT SHOWN)	FILTER MODELS ONLY	731350027
12	MAIN WIRING LOOM (NOT SHOWN)	NON-FILTER MODELS	731370000
13	CONTROL PANEL WIRING LOOM (NOT SHOWN)	401 ONLY	731350028
14	CONTROL PANEL WIRING LOOM (NOT SHOWN)	402 ONLY	731360003

CLEARED FOR PRODUCTION

ISSUE	MOD No	ALTERATION	DRAWN BY	DATE
A	1234/10	PRODUCTION ISSUE	G.SMITH	22/11/10
B	6352	ITEMS 8A & 9A ADDED	F GARVOCK	10/03/11

© NO REPRODUCTION OR PUBLICATION OF THIS DRAWING MAY BE MADE AND NO ARTICLE MAY BE MANUFACTURED OR ASSEMBLED IN ACCORDANCE WITH THIS DRAWING WITHOUT PRIOR WRITTEN CONSENT. THIS PROHIBITION IS A TERM OF ANY CONTRACT RELATING TO THIS DRAWING. RIGHTS RESERVED UNDER THE COPYRIGHT ACT 1956 AS AMENDED BY THE DESIGN COPYRIGHT ACT 1968

IF IN DOUBT ASK
DO NOT SCALE
FIRST ANGLE PROJECTION



UNLESS OTHERWISE SPECIFIED:
DIMENSIONS ARE IN MILLIMETERS
TOLERANCES:
LINEAR: ±0.5mm
ANGULAR: ±0.5 DEG

DEBUR AND
BREAK SHARP EDGES

WEIGHT: 1192208.27g



DRAWN: **G.SMITH**

DATE: **22/11/10**

SCALE:

MATL:

THICKNESS:

BIN No:

PRODUCT

E401/402 SINGLE PAN FRYER

TITLE

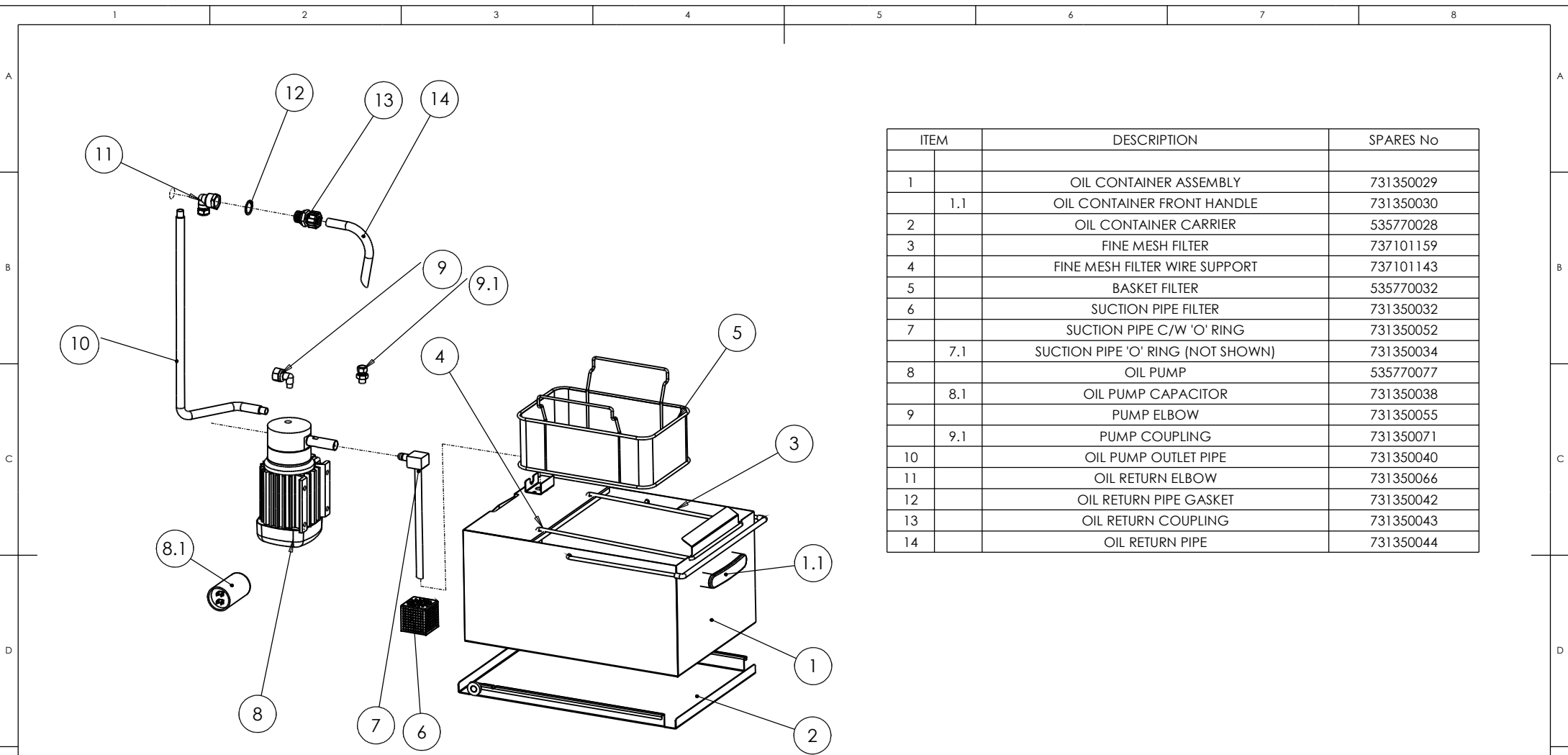
SPARES - ELECTRICS

DRAWING NUMBER

AD48020

ISSUE

B




ITEM	DESCRIPTION	SPARES No
1	OIL CONTAINER ASSEMBLY	731350029
1.1	OIL CONTAINER FRONT HANDLE	731350030
2	OIL CONTAINER CARRIER	535770028
3	FINE MESH FILTER	737101159
4	FINE MESH FILTER WIRE SUPPORT	737101143
5	BASKET FILTER	535770032
6	SUCTION PIPE FILTER	731350032
7	SUCTION PIPE C/W 'O' RING	731350052
7.1	SUCTION PIPE 'O' RING (NOT SHOWN)	731350034
8	OIL PUMP	535770077
8.1	OIL PUMP CAPACITOR	731350038
9	PUMP ELBOW	731350055
9.1	PUMP COUPLING	731350071
10	OIL PUMP OUTLET PIPE	731350040
11	OIL RETURN ELBOW	731350066
12	OIL RETURN PIPE GASKET	731350042
13	OIL RETURN COUPLING	731350043
14	OIL RETURN PIPE	731350044

PRODUCTION ISSUE

ISSUE	MOD No	ALTERATION	DRAWN BY	DATE
B	6580	ITEM 17 ADDED	F GARVOCK	06/03/12
C	7826	ITEMS UPDATED	F.GARVOCK	21/03/17

NO REPRODUCTION OR PUBLICATION OF THIS DRAWING MAY BE MADE AND NO ARTICLE MAY BE MANUFACTURED OR ASSEMBLED IN ACCORDANCE WITH THIS DRAWING WITHOUT PRIOR WRITTEN CONSENT. THIS PROHIBITION IS A TERM OF ANY CONTRACT RELATING TO THIS DRAWING. RIGHTS RESERVED UNDER THE COPYRIGHT ACT 1956 AS AMENDED BY THE DESIGN COPYRIGHT ACT 1968

IF IN DOUBT ASK
DO NOT SCALE
FIRST ANGLE PROJECTION



UNLESS OTHERWISE SPECIFIED:
DIMENSIONS ARE IN MILLIMETERS
TOLERANCES:
LINEAR: $\pm 0.5\text{mm}$
ANGULAR: $\pm 0.5\text{ DEG}$

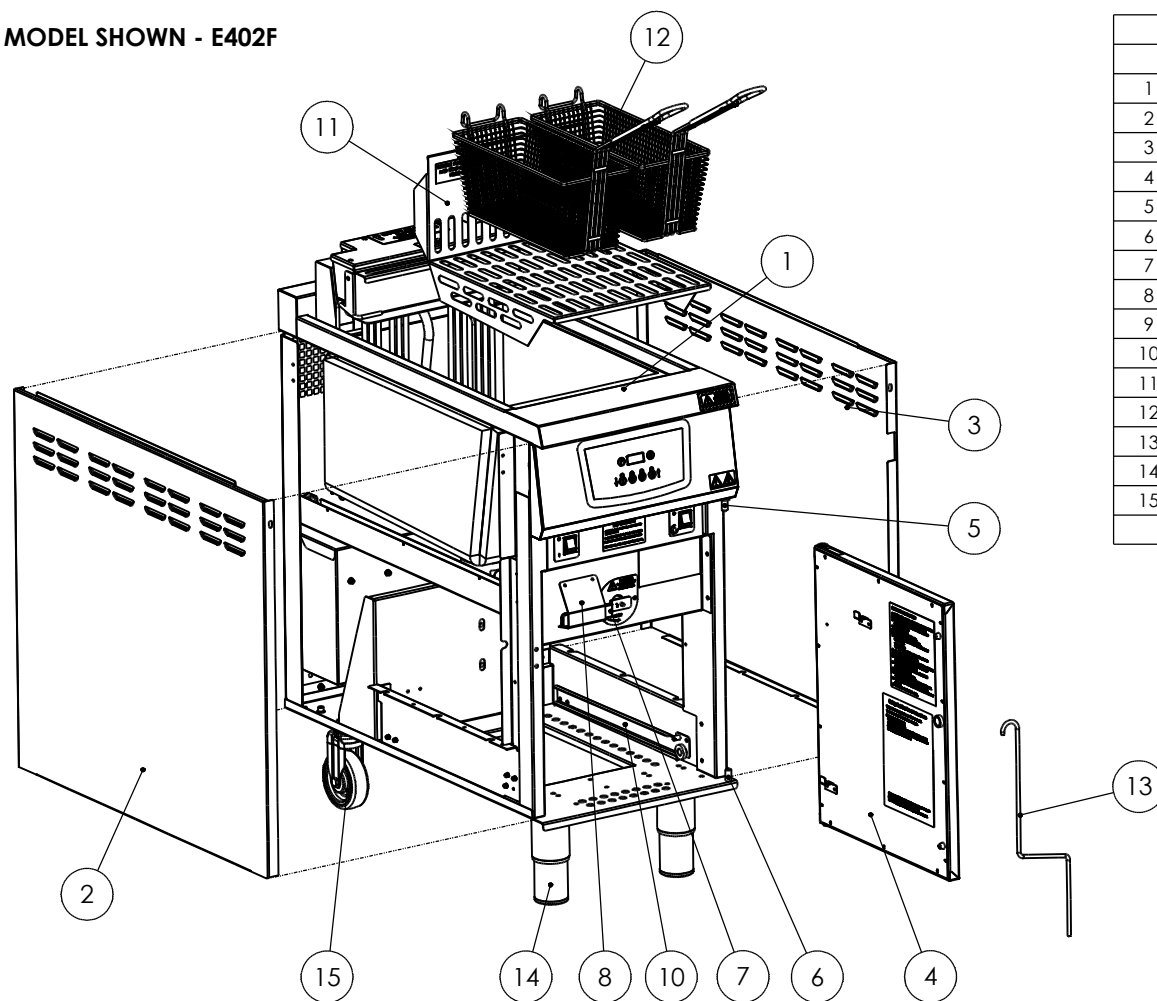
DEBUR AND
BREAK SHARP EDGES

WEIGHT: g



DRAWN: G.SMITH	PRODUCT E401F / E402F SINGLE PAN FRYER		
DATE: 23/11/10			
SCALE:			
TITLE SPARES - FILTRATION			
MATL:		DRAWING NUMBER	ISSUE
THICKNESS:	FINISH:	AD48021	C
BIN No:	PART No:		

MODEL SHOWN - E402F



ITEM	DESCRIPTION	SPARES No
1	HOB / PAN ASSEMBLY C/W DRAIN VALVE	731350003
2	LH OUTER SIDE	536300007
3	RH OUTER SIDE	536300008
4	DOOR ASSEMBLY	731350006
5	TOP DOOR HINGE	536430108
6	BOTTOM DOOR HINGE PIN	535770140
7	DRAIN VALVE & HANDLE ASSY	731350007
8	DRAIN HANDLE FLAP	731350008
9	LH BUCKET RUNNER (NOT SHOWN)	731350009
10	RH BUCKET RUNNER	731350010
11	ELEMENT GUARD	731350011
12	CHIP BASKET	536430126
13	DRAIN PROD / LIFTING TOOL	731350012
14	ADJUSTABLE FEET	731350013
15	CASTORS	731350014

PRODUCTION ISSUE

ISSUE	MOD No	ALTERATION	DRAWN BY	DATE
B	7771	DESCRIPTION OF ITEM 7 WAS HANDLE ONLY	F.GARVOCK	09/01/17

IF IN DOUBT ASK
DO NOT SCALE
FIRST ANGLE PROJECTION



UNLESS OTHERWISE SPECIFIED:
DIMENSIONS ARE IN MILLIMETERS
TOLERANCES:
LINEAR: $\pm 0.5\text{mm}$
ANGULAR: $\pm 0.5\text{ DEG}$

DEBUR AND
BREAK SHARP EDGES

WEIGHT: g



DRAWN: **G.SMITH**

DATE: **23/11/10**

SCALE:

MATL:

THICKNESS:

BIN No:

PRODUCT

E401/402 SINGLE PAN FRYER

TITLE

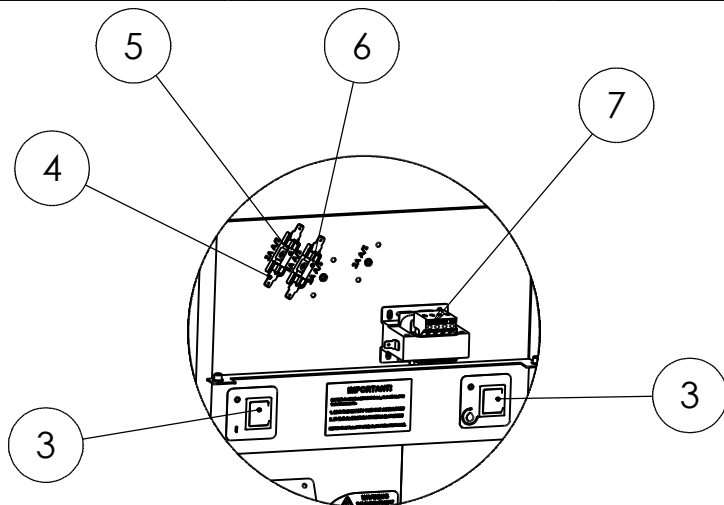
SPARES - MAIN BODY POST MAR 2015

DRAWING NUMBER

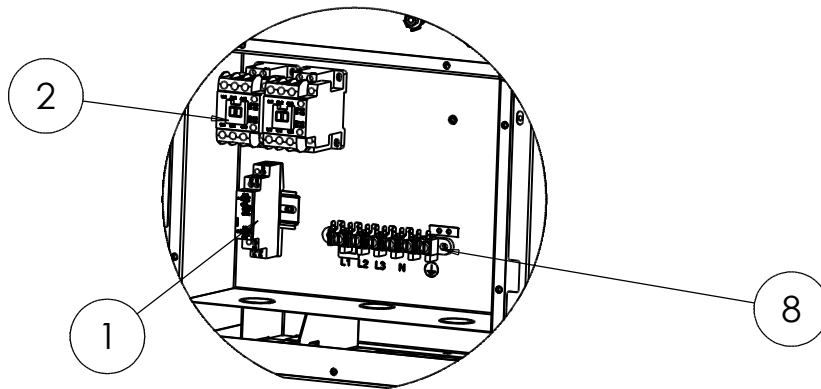
AD51905

ISSUE

B



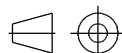
ITEM	DESCRIPTION	UNIT	SPARES No.
1	PUMP TIMER	FILTER ONLY	536470007
2	CONTACTOR		731350070
3	ROCKER SWITCH		536380008
4	FUSE HOLDER		734310510
5	2A ANTI SURGE FUSE		734243006
6	5A ANTI SURGE FUSE	FILTER ONLY	536430009
7	TRANSFORMER		731360002
8	TERMINAL BLOCK		731000006
9	BALLAST RESISTOR (NOT ILLUSTRATED)	401 & 401F ONLY	536300058
10	MAINS CABLE		731350046
11	CABLE GLAND C/W NUT		731350026
12	WIRING LOOM	401F	731350110
13	WIRING LOOM	402F	731360010
14	WIRING LOOM	401	731370010
15	WIRING LOOM	402	731380000



PRODUCTION ISSUE

ISSUE	MOD No	ALTERATION	DRAWN BY	DATE
A	7705	PRODUCTION ISSUE	F.GARVOCK	03/10/16

IF IN DOUBT ASK
DO NOT SCALE
FIRST ANGLE PROJECTION



UNLESS OTHERWISE SPECIFIED:
DIMENSIONS ARE IN MILLIMETERS
TOLERANCES:
LINEAR: $\pm 0.5\text{mm}$
ANGULAR: $\pm 0.5\text{ DEG}$

DEBUR AND
BREAK SHARP EDGES

WEIGHT: g



DRAWN: F.GARVOCK	PRODUCT E401/2/F FRYERS	
DATE: 29/09/16	TITLE SPARES - ELECTRICS POST MAR 2016	
SCALE:		
MATL:	DRAWING NUMBER	ISSUE
THICKNESS:	FINISH:	AD51906
BIN No:	PART No:	

A