



Dominator

E2078-135 Boiling Pan

Key features

- Round boiling pan with a capacity of 135 litres
- Accurate temperature control
 - Move easily from simmer to boil
- Swivel tap fitted as standard
 - Easily fill / top up pan as and when required
- Large 1 1/4" draw-off
 - Quick and easy to empty
- One piece stainless steel pan
 - Easy to clean and keep clean
- Lift off lid supplied as standard
 - Increased safety as lid directs steam away from user

Accessories

- Lift-out pan kit

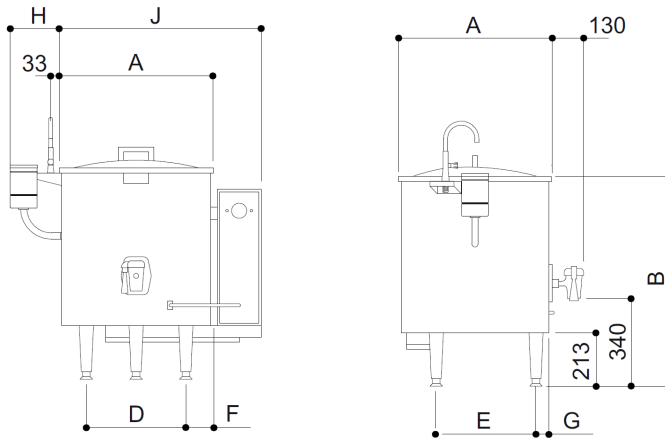
Similar Models

- E2078-45 electric boiling pan (45 litres)
- E2078-90 electric boiling pan (90 litres)
- G2078-135 gas boiling pan (135 litres)

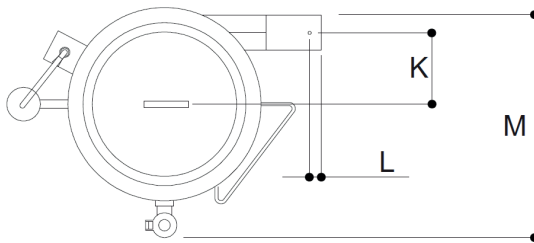


DOMINATOR

E2078-135 Boiling Pan



C = Inside pan diameter



Measurements *in mm*

| | |
|---|------|
| A | Ø826 |
| B | 864 |
| C | Ø648 |
| D | 606 |
| E | 566 |
| F | 110 |
| G | 62 |
| H | 178 |
| J | 940 |
| K | 330 |
| L | 45 |
| M | 960 |

Specification details

| | |
|------------------------------------|------------------------------|
| Total rating (kW) | 13.9 |
| Electrical supply voltage | 400V-415V 3N~ or 230-240V~ |
| Electrical current split (A) | L1: 17.5, L2: 20.8, L3: 20.8 |
| Capacity (litres) | 135 |
| Water inlet | 1/2" BSP |
| Weight (kg) | 145 |
| Packed weight (kg) | 155 |
| Packed dimensions (w x d x h - mm) | 1300 x 1000 x 1500 |
| GTIN number | 5056466904982 |

Installation notes

Adequate ventilation must be provided to supply sufficient fresh air and to allow easy removal of any such products that may present a risk to health. Please consult current legislation for details that relate to specific locations.

Install unit on a level, fireproof surface in a well-lit position. If floor is made of a combustible material, local fire requirements must be checked to ensure compliance.

A clearance of 150mm should be observed between appliance and any combustible wall.



Falcon Foodservice Equipment, Wallace View, Hillfoots Road, Stirling FK9 5PY Scotland
t: +44 (0) 1786 455 200 e: info@falconfoodservice.com www.falconfoodservice.com

E2078-135/SS/0521