

ITEM	DESCRIPTION	E&G2078 45L	E&G2078 90L	E&G2078 134L
		SPARES No.	SPARES No.	SPARES No.
1	HANDLE ASSEMBLY	530730006		
2	LID AND HANDLE ASSY	530780180		
3	OUTER CASING	530730004	530740003	530750003
4	LID HOLDER	530730050	530740014	530750015
5	ADJUSTABLE FOOT	530783030		
6	DRAW OFF COCK	530783010		
7	SWIVEL TAP BRACKET	530730005		
8	SWIVEL TAP ASSEMBLY	530783040		
8a	SWIVEL TAP O RING	530783012		
9	STRAINER ASSEMBLY	530783080	530740009	530750008

# PRODUCTION ISSUE

ISSUE	MOD No	ALTERATION	DRAWN BY	DATE
A	8142	PRODUCTION ISSUE	F.GARVOCK	01/06/18
B	8170	REF TO E2078 ADDED	F.GARVOCK	18/07/18

IF IN DOUBT ASK  
DO NOT SCALE  
FIRST ANGLE PROJECTION



UNLESS OTHERWISE SPECIFIED:  
DIMENSIONS ARE IN MILLIMETERS  
TOLERANCES:  
LINEAR: ±0.5mm  
ANGULAR: ±0.5 DEG

DEBUR AND  
BREAK SHARP EDGES

WEIGHT: 49021.14g



DRAWN: **F.GARVOCK**

DATE: **31/05/18**

SCALE: **1:10**

MATL:

PRODUCT

**E&G2078 BOILING PAN**

TITLE

**SPARES - FITMENTS**

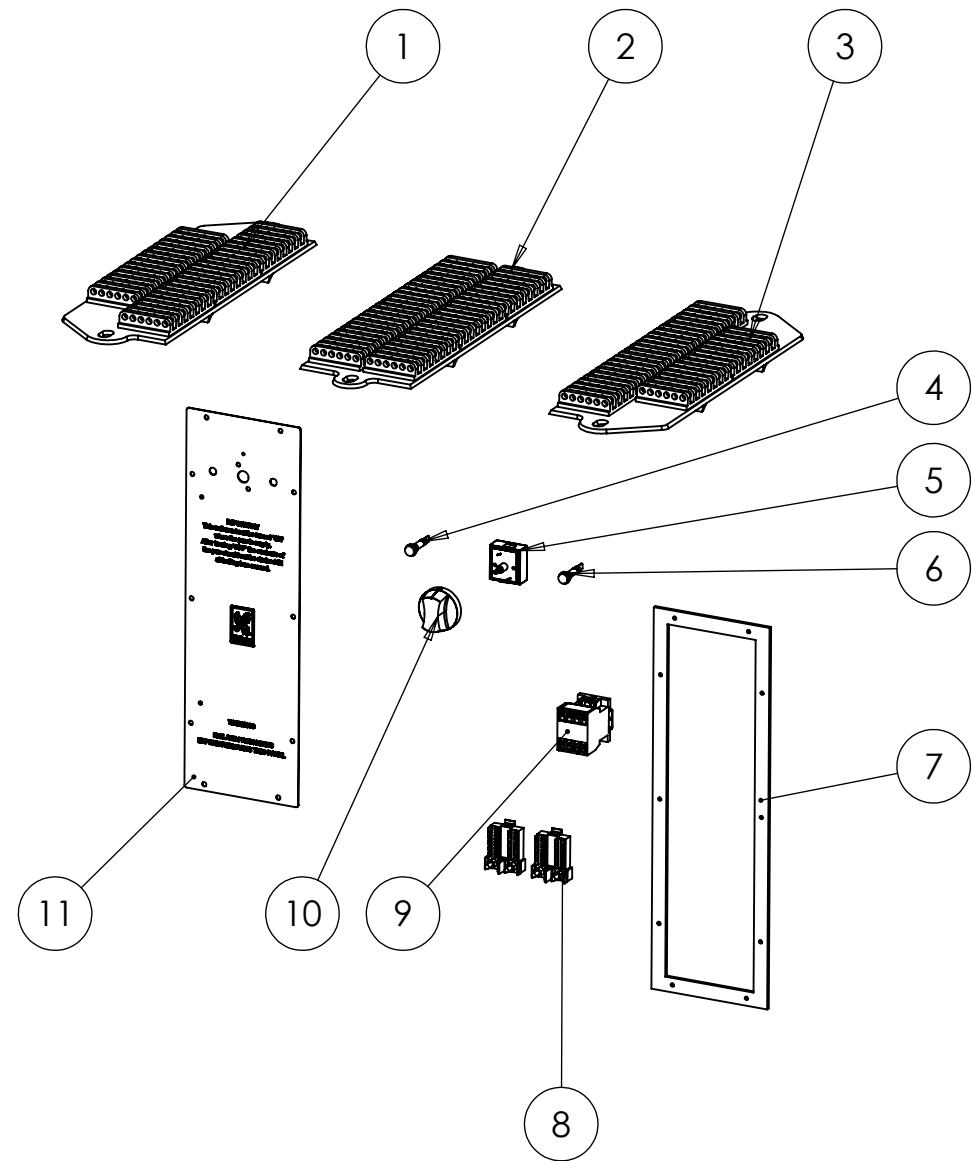
FINISH:

DRAWING NUMBER

**AF55327**

ISSUE

**B**



ITEM	DESCRIPTION	E2078 45L	E2078 90L	E2078 135 L
1	LH ELEMENT ASSY	730780010	730790010	730800010
2	CENTRE ELEMENT ASSY		730790020	730800020
3	RH ELEMENT ASSY	730780020	730790030	730800030
3A	ELEMENT SETS	730780040	730790040	730800040
4	RED NEON		730962010	
5	ENERGY REGULATOR		731750770	
6	AMBER NEON		730962040	
7	CONTROL PANEL SEAL		530843240	
8	TERMINAL BLOCK SET		730860170	
9	CONTACTOR AND RAIL		731742082	
9A	CONTACTOR ONLY		734310440	
10	CONTROL KNOB		730790050	
11	CONTROL PANEL		730710000	

# PRODUCTION ISSUE

ISSUE	MOD No	ALTERATION	DRAWN BY	DATE
A	8170	PRODUCTION ISSUE	F.GARVOCK	18/07/18

IF IN DOUBT ASK  
DO NOT SCALE  
FIRST ANGLE PROJECTION

UNLESS OTHERWISE SPECIFIED:  
DIMENSIONS ARE IN MILLIMETERS  
TOLERANCES:  
LINEAR: ±0.5mm  
ANGULAR: ±0.5 DEG

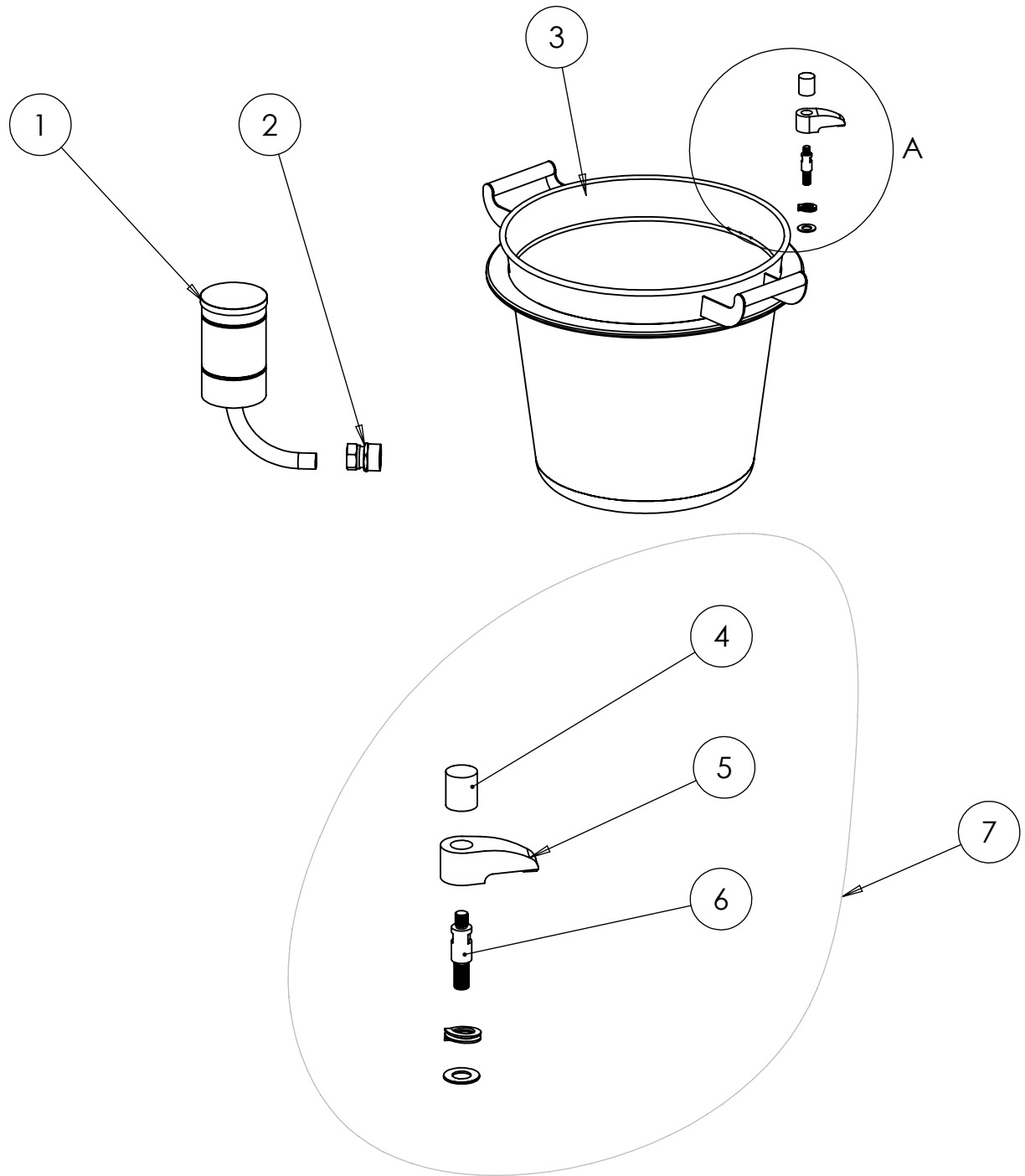
DEBUR AND  
BREAK SHARP EDGES

WEIGHT: 77847.34g



DRAWN: <b>F.GARVOCK</b>	PRODUCT	
DATE: <b>18/07/18</b>	<b>E2078 BOILING PANS</b>	
SCALE: <b>1:10</b>	TITLE	
	<b>SPARES - ELECTRICS</b>	
MATL:	DRAWING NUMBER	ISSUE
FINISH:	<b>AF55443</b>	<b>A</b>

ITEM	DESCRIPTION	E&G2078-32L	E&G2078-68L	E&G2078-100L
		SPARES No.	SPARES No.	SPARES No.
1	FILLING FUNNEL		530730023	
2	COUPLING STUD		530783200	
3	LIFT OUT PAN KIT	520700012	520710012	520720012
4	NUT KNURLED		530730031	
5	SECURE CLAMP		530730030	
6	CLAMP PIN		530730032	
7	CLAMP KIT		530803120	



# PRODUCTION ISSUE

ISSUE	MOD No	ALTERATION	DRAWN BY	DATE
A	8142	PRODUCTION ISSUE	F.GARVOCK	01/06/18
B	8170	REF TO E2078 ADDED	F.GARVOCK	18/07/18

IF IN DOUBT ASK  
DO NOT SCALE  
FIRST ANGLE PROJECTION

UNLESS OTHERWISE SPECIFIED:  
DIMENSIONS ARE IN MILLIMETERS  
TOLERANCES:  
LINEAR: ±0.5mm  
ANGULAR: ±0.5 DEG

DEBUR AND  
BREAK SHARP EDGES

WEIGHT: 14572.34g



DRAWN: <b>F.GARVOCK</b>	PRODUCT	<b>E&amp;G2078 BOILING PAN</b>	
DATE: <b>01/06/18</b>	TITLE	<b>SPARES - LIFT OUT PAN</b>	
SCALE: <b>1:10</b>	DRAWING NUMBER	<b>AF55332</b>	ISSUE
MATL:	FINISH:		<b>B</b>

© NO REPRODUCTION OR PUBLICATION OF THIS DRAWING MAY BE MADE AND NO ARTICLE MAY BE MANUFACTURED OR ASSEMBLED IN ACCORDANCE WITH THIS DRAWING WITHOUT PRIOR WRITTEN CONSENT. THIS PROHIBITION IS A TERM OF ANY CONTRACT RELATING TO THIS DRAWING. RIGHTS RESERVED UNDER THE COPYRIGHT ACT 1956 AS AMENDED BY THE DESIGN COPYRIGHT ACT 1968