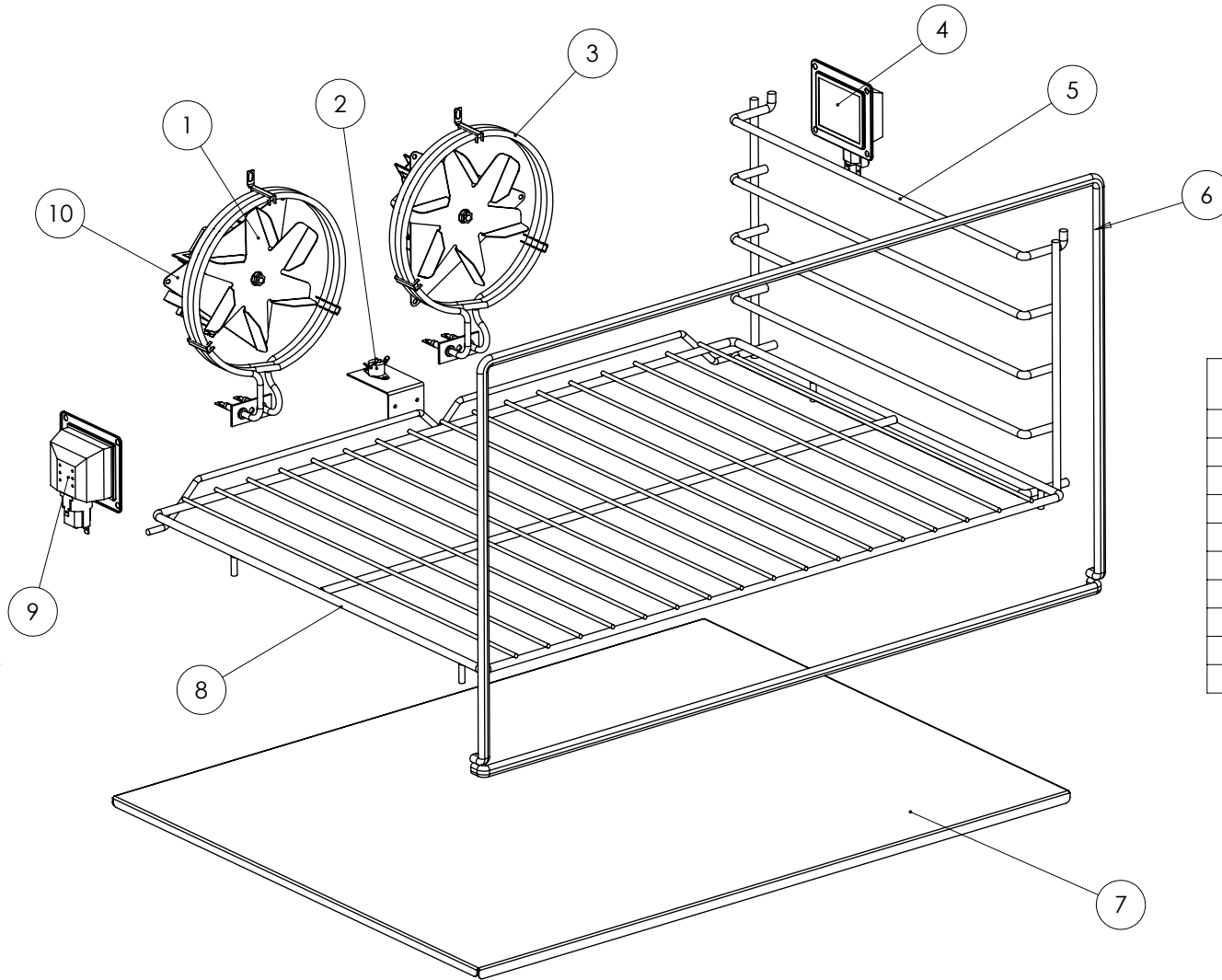


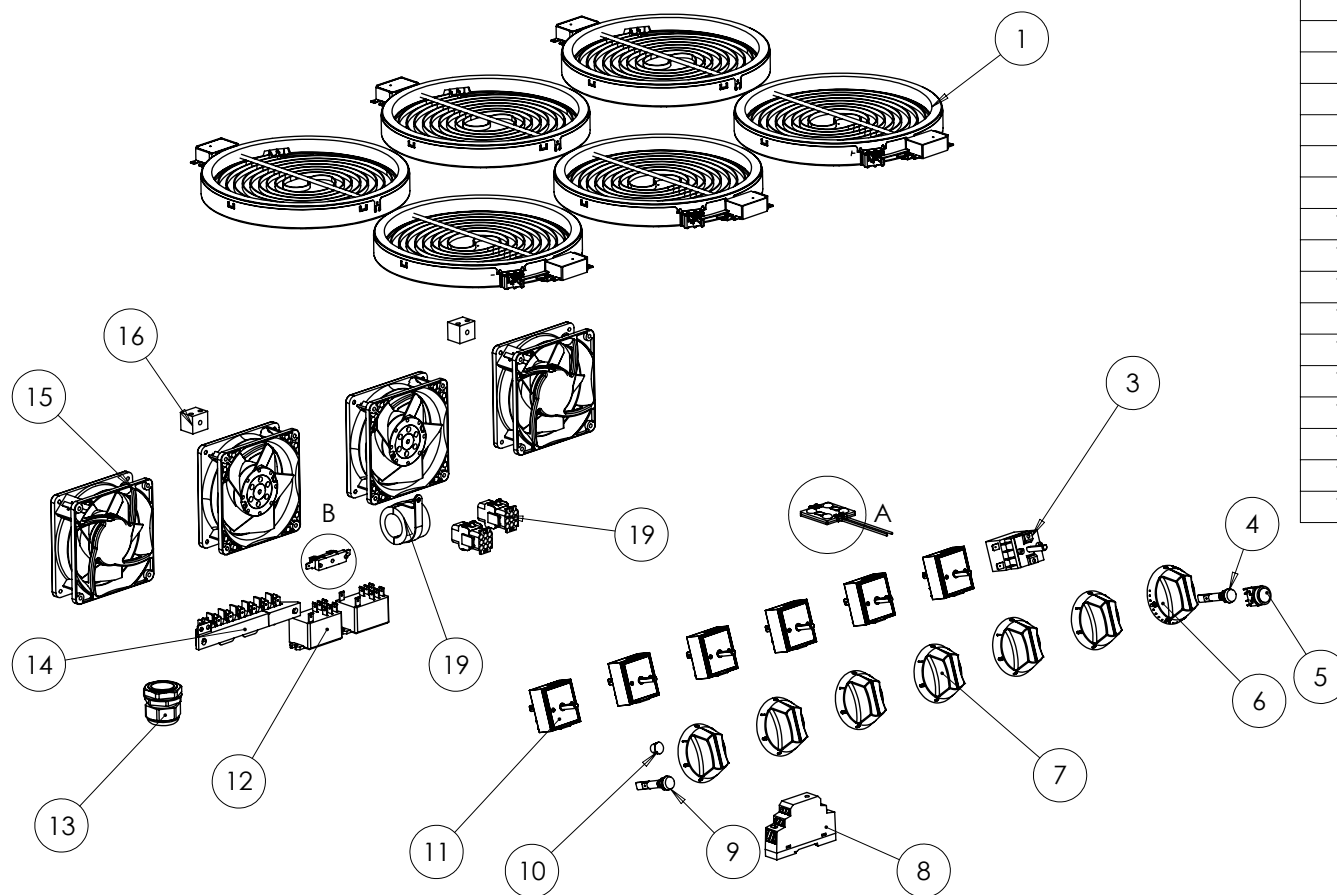
ITEM No.	DESCRIPTION	SPARES CODE
1	AIR FILTER	733990013
2	ELECTRIC GLASSTOP HOB ASSEMBLY	734110006
3	ELEMENT SUPPORT PLATE	734110007
4	WARNING LIGHT MOUNT	734110008
5	CONTROLS AIR DUCT COVER	734110009
6	RH OUTER SIDE PANEL	535200001
7	CONTROL PANEL ASSEMBLY	733990002
8	RH TOP DOOR HINGE	535200008
9	DOOR HINGE BUSH	537101290
10	OVEN DOOR LATCH & SHIM	535200013
11	DOOR CATCH	535480054
12	RH DOOR ASSEMBLY	535300003
13	OVEN HANDLE	733990018
14	LH DOOR ASSEMBLY	535300002
15	RH BOTTOM DOOR HINGE	535200009
16	CASTOR ASSEMBLY - SWIVEL	530964350
17	CASTOR ASSEMBLY - FIXED	535290031
18	ST/ST ADJUSTABLE LEG	535480067
19	LH BOTTOM DOOR HINGE	535200007
20	RH OUTER SIDE PANEL	535200000
21	LH TOP DOOR HINGE	535200006
22	HOB STAY ROD	733990012
23	ELEMENT MOUNT BAR	734110010



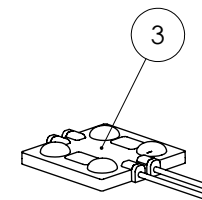
ITEM No.	DESCRIPTION	SPARES CODE
1	OVEN IMPELLOR	535420010
2	OVEN SAFETY THERMOSTAT	535420015
3	OVEN ELEMENT 3.2kW	535420009
4	OVEN LIGHT BULB	734350190
5	SHELF HANGER	535200012
6	DOOR SEAL ASSEMBLY	535210001
7	OVEN BOTTOM PANEL	535210002
8	OVEN SHELF	525290004
9	OVEN LAMP C/W GLASS	732910390
10	OVEN FAN MOTOR 50Hz	535420010



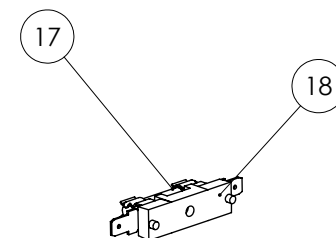
E3196 - SPARES - CONTROLS



ITEM No.	DESCRIPTION	SPARES CODE
1	2.3kW CERAMIC ELECTRIC ELEMENT	734110000
2	4 LED BLOCK 12V DC 1.8W	734110001
3	THERMOSTAT OTC FAN OVEN	731050004
4	MAINS PILOT LIGHT (AMBER)	730962040
5	LIGHT SWITCH	535500037
6	OVEN CONTROL KNOB	535300004
7	ELEMENT CONTROL KNOB	731570001
8	12V DC POWER SUPPLY	734110002
9	MAINS PILOT LIGHT (RED)	730962010
10	BLANKING PLUG	733990013
11	ENERGY REGULATOR	737630011
12	SAFETY/OPERATIONAL RELAY	731570004
13	CABLE GLAND Ø18.00-25.00mm	734110003
14	MAINS TERMINAL (7 WAY)	734000075
15	REAR COOLING FAN	735400360
16	TERMINAL BLOCK	734060004
17	5A FUSE	734110004
18	FUSE HOLDER	734310510
19	9 WAY PLUG SET	734110005



DETAIL A
SCALE 1 : 2



DETAIL B
SCALE 1 : 2